



**Broker:** Jorge Moreno  
**Tel:** +52 (998) 385 4585  
**Email:** j.moreno@yachtcancun.com



## Mondomarine 160 (2006/2021)

Ubicado en Grecia.

### Detalles

FULL HULL AND SUPERSTRUCTURE REPAINT IN 2018 AND 2021. NEW TENDER IN 2021 (ZAR 5.7m with 150Hp Suzuki) Refit/Maintenance Details 2021: Hull Painting Polishing of the woods at master and upper salon New decoration at the Upper Salon New dining chairs at the main salon New upholstery of the sofas at the main salon New chairs at the sundeck Installation of new art paintings Rearrangement of the garage New lighting in the garage Coffee tables at main salon painted New bed headboards in all cabins Polishing of the marbles in all en suite facilities New lamps and lampshades Installation of Corian marbles in the Pantry Refit/Maintenance Details 2020: New QLED Smart TVs at the lower deck double cabins. New ZAR tender. 3 paintings replaced with brand new. Sundeck furniture and bar repainted. Teak refitted on sundeck and main deck. Superstructure paint jobs. Lower deck double cabins, VIP cabin, Master Cabin, upper saloon and main deck corridor re-varnished. Marble polishing. New marble bar and leather upholstery of the bar stools at the sundeck. Exterior tables re-varnished. New glass installation on starboard embarkation doors. New interior LED lights. New bath accessories. Gold plating where required. New carpets in the dining area of the main deck saloon. New teak deck at the ladder steps of the bow and at the embarkation ladder. New wooden wall parts in the VIP and twin cabins. New dining table aft main deck and ceiling repainted. New marble floors in en suite facilities. New mirrors in guests' en suite facilities. New linen. Major overhaul of Diesel generators REPLACEMENT OF SUNDECK AWNING IN 2019. TEAK INSTALLATION IN GARAZE AREA IN 2018.

**Eslora:**160ft

**Manga:**28ft

**Calado:**9ft

**Motores:**2 x Caterpillar 3512B 1,850 hp

**Tanque de combustible:**21239gal

**Tanque de agua:**6499gal

**Camarotes:**7 (14 pax) + 1 Capitán + 5 Tripulación (10 pax)

**Baños:**7 + 1 + 5

**Displacement approx:**355tons

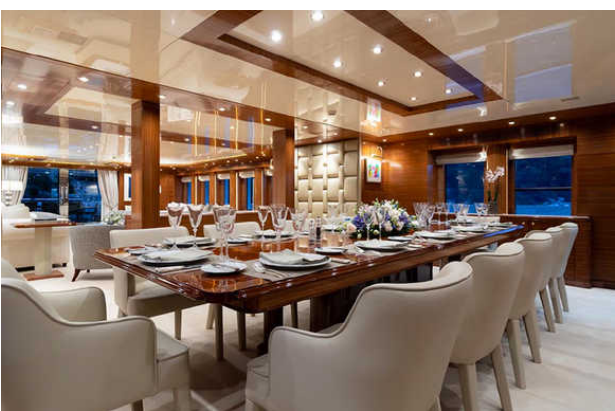
**Speed Range:**17-7 - 14.2nudos

**Ubicación:**35

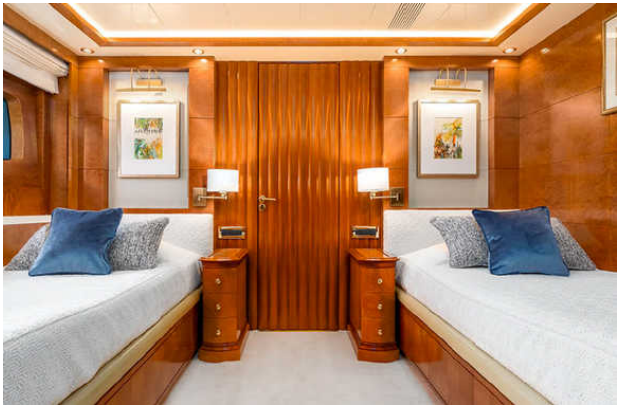
Exteriores



Interiores







## Interiores

