



Broker: Jorge Moreno
Tel: +52 (998) 385 4585
Email: j.moreno@yachtcancun.com



Mondomarine 166 (2009/2013)

Eslora:166.8ft

Manga:30.6ft

Calado:8.6ft

Motores:2 x 2,480hp MTU 12V 4000 M71 (3,824 hrs)

Tanque de combustible:22454gal

Tanque de agua:4226gal

Camarotes:5 (10 pax) + 5 Tripulación (10 pax)

Baños:6 + 4

Displacement approx:475tons

Speed Range:15.5 - 18nudos

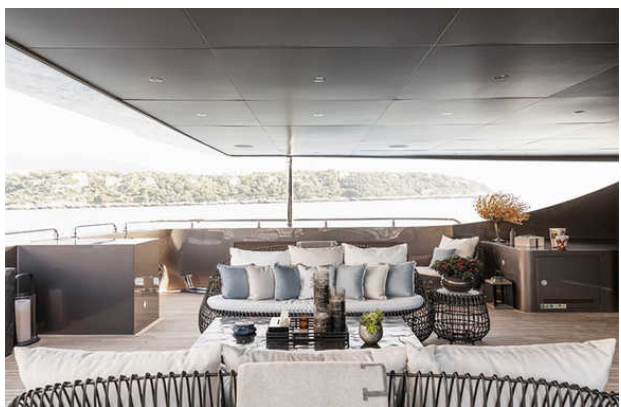
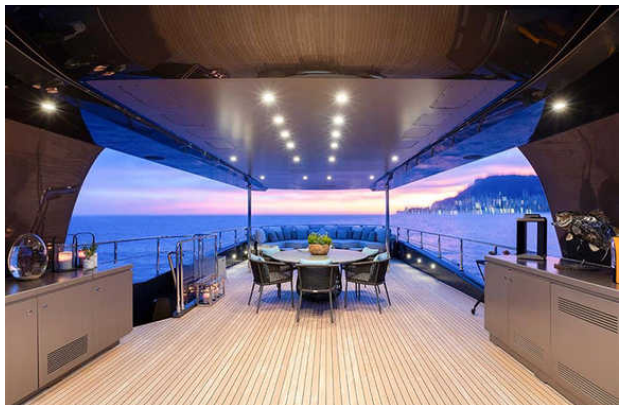
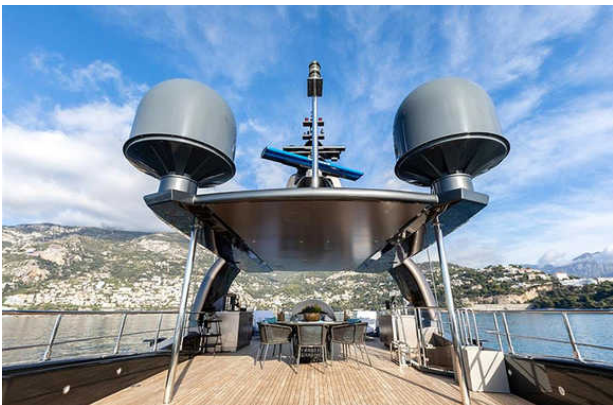
Ubicación:53

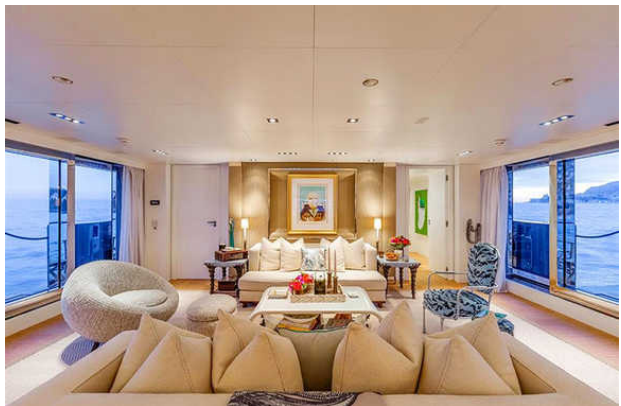
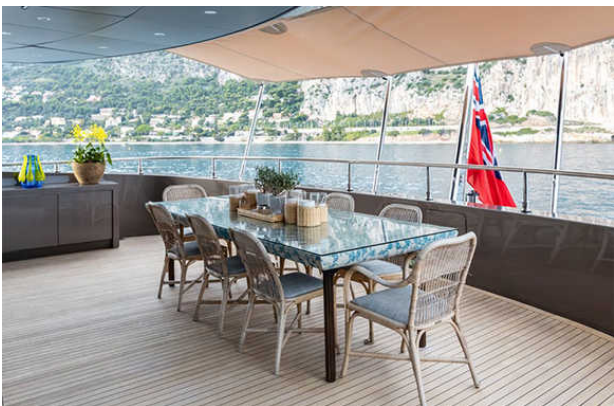
Exteriores





Interiores









Interiores

