



**Broker:** Jorge Moreno  
**Tel:** +52 (998) 385 4585  
**Email:** j.moreno@yachtcancun.com



## Astondoa 102 GLX (2007)

Ubicado en Cannes, Francia. Astondoa 102 GLX (2007) ha tenido un solo dueño desde nuevo, tripulación permanente y servicios de mantenimiento al día.

### Detalles

This 31.45 metre ASTONDOA 102 GLX motor-yacht was delivered to her current owner in late 2007 as one of the yard's 102 GLX models.

The ASTONDOA 102 GLX accommodates up to 12 guests in four cabins comprising a master suite, VIP suite and two twins, both with Pullman berths and a versatile Captain's/Guest cabin on the main deck. All guest cabins have entertainment centres, Sony flatscreen television sets and en suite bathroom facilities while a further three cabins sleep five crewmembers aboard this flybridge Superyacht.

The saloon has panelling in a clear oak wood finish and features a bar and a full entertainment system including a 40-inch Panasonic flatscreen television set, a Sony home cinema and a Bose stereo surround sound system.

Outdoor areas are expansive and feature several areas for al fresco entertaining and dining including a vast flybridge, sun deck and an aft deck with comfortable seating for eight guests. Up on the flybridge is the perfect location for outdoor entertaining and dining, with a table seating 10 guests, a bar, fridge and a Bimini top providing shelter from the midday sun.

Twin 1950 Hp 16V 2000 M91 MTU diesel engines allow a cruising speed of 20 knots, topping out at 24 knots. Drawing on her 13,600 litre fuel tanks, she has a range of 450 nautical miles at an economical speed of 14 knots.

This immaculate condition ASTONDOA 102 GLX has had a single owner since new, a permanent crew and professional maintenance.

**Eslora:**102ft

**Manga:**20.3ft

**Calado:**3.6ft

**Motores:**MTU 16V 2000 M91 (1,810 hrs)

**Tanque de combustible:**31706gal

**Tanque de agua:**1056gal

**Camarotes:**4 (10 pax)

**Baños:**4

**Ubicación:**33

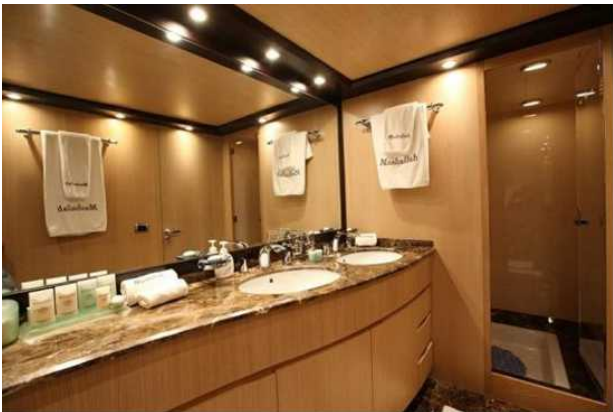
# Exteriores





# Interiores







# Interiores

